

# Quartzline

# MAGAZINE



## ‘We aim to be trendsetters’

Quartzline is a modern manufacturer where development and quality are central pillars

## A Quartzline floor on any surface

QUARTZLINE ACQUIRES EUROSTEP POLAND

## The Factory

Quartzline’s factory was designed and built entirely according to the vision and wishes of Managing Director Arthur Kaptein

INHOUD



12



17



8



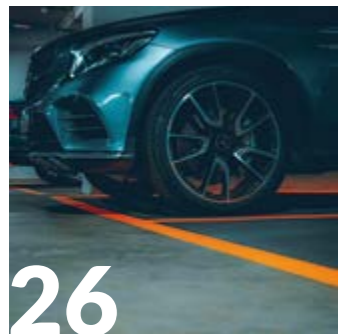
18



25



7



26

- 3 OUR OWN PATH**
- 4 A Quartzline floor on any surface**
- 6 Quartzline CONSTRUCT leveling compounds**
- 7 Easy ordering AND FAST DELIVERY**
- 8 'We aim to be trendsetters'**
- 10 Top in floor coatings**
- 11 Q-mix**
- 12 History**
- 15 Q-mix**
- 16 Floor inspirations**
- 17 Highly efficient underfloor heating WITH QUARTZLINE FLOOR SYSTEMS**
- 18 The Factory**
- 20 Take the FLOOR TOUR at Quartzline**
- 21 Instructions for optimal results**
- 22 Quartzline spreads its wings**
- 23 Tools**
- 24 QUARTZLINE PROTECT FAST CURE PROTECTS FLOORS**
- 25 QUARTZLINE ACQUIRES EUROSTEP POLAND**
- 26 EUROSTEP TOP-CLASS FLOOR COVERINGS**
- 27 EUROSTEP MMA AND PUCEM FLOORS**
- 28 WE ARE QUARTZLINE!**



# OUR OWN PATH

This may be your first encounter with Quartzline BV. We are a flooring manufacturer based in Dordrecht. The development and production of functional floor and wall systems form our core activities. You'll find our resin floors in both private and commercial settings. In other words, from private residences to large industrial halls.

Quartzline is a family-owned business. Founded in 1976, we are now among the top Dutch flooring manufacturers. We supply exclusively to professional floor installers and construction companies. Every day, numerous trucks leave our logistics department to deliver orders to our customers both domestically and internationally.

We are proud of our company. Our philosophy is to do what the customer expects from us: good quality, fast delivery times, and a fair price. We simply provide all the ingredients to install a top-quality floor. In this magazine, we offer you a look behind the scenes. Our beautiful products and floor systems are showcased, giving you an impression of our modern, process-driven factory. We also inform you about trends and other topics that make our company and industry so dynamic and interesting.

Three years ago, we acquired the Polish flooring manufacturer EUROSTEP. This company is globally renowned for its industrial floors. Quartzline and EUROSTEP form a strong combination, allowing us to pursue our own path even more decisively.

In this magazine, you'll discover what Quartzline and EUROSTEP have to offer. Form your own opinion - it's worth it!

Arthur Kaptein  
Managing Director / Owner





# A Quartzline floor on any surface

The popularity of our floors is easy to explain. We discuss this with Account Manager Theo van der Plas, an experienced professional in the flooring industry. "Quartzline floors are suitable for almost all applications. But let's start at the beginning," says Theo

"Our floors can be broadly categorized into three types: the **epoxy resin floor** (EP), the **polyurethane resin floor** (PU) and the **cement-bound resin floor**. An epoxy floor is harder than a polyurethane floor. The cement-bound resin floor is a four-millimeter-thick floor, also known as a concrete-look floor."

"Epoxy resin floors are mainly found in commercial and industrial environments, but also in healthcare, education and similar sectors. Polyurethane resin floors are particularly popular in residential homes, and cement-bound floors are often found in industrial settings."

Theo continues: "The floor systems we supply can be divided into **seven main groups**:"



**Quartzline PROTECT** floor systems are highly sought-after epoxy floors for industrial applications. A seamless, heavy-duty, and chemically resistant flooring system with coved skirting.



**Quartzline DECO** floor systems are decorative resin floors, particularly in demand in residential spaces. This floor feels comfortable and is available in all colors. Suitable for underfloor heating.



**Quartzline CEM** are our cement-bound floor and wall systems. Sustainable, modern floors with a concrete-like appearance.



**Quartzline MARBLE** are striking, genuine marble floors. The rounded grains ensure pleasant processing and an appealing look, both indoors and outdoors.



**Quartzline STONE** is a robust, seamless stone carpet floor that is easy to maintain. The floor is wear-resistant and available in all conceivable color combinations. It is also suitable for underfloor heating.



**Quartzline MORTAR** is particularly suitable for wet areas. This troweled floor ensures a perfect connection to drainage channels and grates, creating a liquid-tight floor.



**Quartzline CONSTRUCT** are our cement-bound and gypsum-bound leveling compounds.

# Quartzline CONSTRUCT Leveling Compounds

## FOR LEVEL, SMOOTH SURFACES

A beautifully finished floor is only possible if the surface is smooth, stable, and level. For this, we recommend **Quartzline CONSTRUCT leveling compounds**. These guarantee the best results. **CONSTRUCT leveling compounds** are available in various variants and strengths- for both cement-bound and gypsum-bound surfaces.

Account Manager Hans Raams is an expert in leveling and **CONSTRUCT leveling compounds**. He explains: "Before leveling a floor, it must be clean, dust-free, and grease-free. The surface must also be stable and solid. We also offer fiber-reinforced compounds for substrates prone to movement. The fiber-reinforced compound bridges potential cracks. Often, a surface needs to be repaired first. We have all the necessary materials in stock for this."

Most leveling compounds require a few hours of drying time before the floor is walkable again. However, this does not mean the next layer can be applied immediately. The curing time may take hours or even days until the surface is sufficiently dry for the next layer.

Quartzline supplies two types of leveling compounds. **Quartzline CONSTRUCT Cementitious** are cement-bound leveling compounds, while **CONSTRUCT Alpha** are gypsum-bound. Both are suitable for leveling, correcting, and smoothing surfaces such as cement screed, concrete, Fermacell panels, and (ceramic) tiles.



Hans: "Our leveling compounds can be used under floor coverings like resin floors, PVC, wood, linoleum, parquet, and laminate. All our variants are also highly pumpable. Additionally, they can be used over any type of underfloor heating."

Proper surface preparation is essential. Hans adds: "We have all the materials for this in-house. You start by filling large holes with **Quartzline MRP leveling mortar**. This is viscous and does not run. To ensure good adhesion, we recommend applying a primer before leveling. Quartzline offers the right primer for every application. For thicker layers from 5 mm, we have the Cementitious and/or Alpha 5-40 mm variants."

# EASY ORDERING

## AND FAST DELIVERY

Professional floor installers and construction companies naturally want to receive their orders as quickly as possible. Ordering online is very simple. You can place your order 24/7 via our user-friendly webshop at [www.quartzline.nl](http://www.quartzline.nl).

Quartzline BV delivers quickly. All floor systems, products, and tools for floor installation are produced in our own factory and available from stock.

### PICK UP OR HAVE IT DELIVERED?

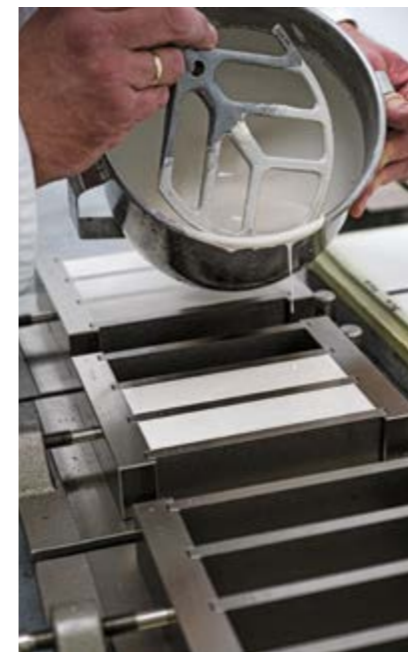
Would you like to pick up your order at our factory in Dordrecht? Orders can typically be collected within a few days. We ensure your order is ready at W.A. Boogaertstraat 5 in Dordrecht. We welcome you from 06:00 AM. Additionally, we deliver daily throughout the Netherlands.





# ‘We aim to be trendsetters’

Quartzline is a modern manufacturer where development and quality are key pillars. The Research & Development (R&D) department continuously develops new formulations for our floor and wall systems, naturally taking into account the legal and environmental requirements of the authorities. The production departments operate under the guidance and supervision of the quality department.



Peter Groeneweg from R&D / Coating Technology at Quartzline: “All our products are sustainable, of high quality, and made from natural raw materials, available in all colors. Our R&D department, quality department, and laboratories closely monitor all developments and trends in areas such as raw materials, products, laws and regulations, sustainability, and the environment. We also closely monitor market dynamics and design trends.”

“More than that,” Peter continues, “we aim to be trendsetters and therefore continuously work on product improvements and the development of new products and floor and wall systems. Before we introduce new

products, we conduct practical tests in collaboration with a select group of processing companies.”

Quartzline also places great emphasis on quality. “For every order leaving our factory, the formulation is precisely documented. This ensures our products always reach the customer in consistently high quality,” says Peter.

“With our Quartzline Quality Management System, we can detect potential production errors at an early stage. This is how we secure our well-known Quartzline quality,” Peter concludes.

*The R&D department, quality department, and laboratories closely monitor all developments and trends.*



# Top in floor coatings

Quartzline is renowned for its top-quality floor coatings. With high-gloss coatings, you achieve high scratch resistance and chemical protection for floors in almost all applications. Additionally, these coatings give the floor a completely new appearance. Quartzline floor coatings provide a beautiful, robust, and easy-to-maintain floor.

## LIKE NEW

With **Quartzline floor coatings**, you transform an old or damaged floor into a functional and strong floor. Afterward, the floor is like new, requires little maintenance, and is easy to keep clean. Account Manager **Theo van der Plas**: "Our floor coatings are suitable for concrete, cement, and gypsum surfaces. With the coatings, you create a seamless floor that withstands intensive use and—depending on the coating—also offers high UV resistance. Increasingly, floors are being made like new with our coatings. Our coatings are of high quality, easy to apply, and deliver a beautiful result, as almost all colors are available with color chips."



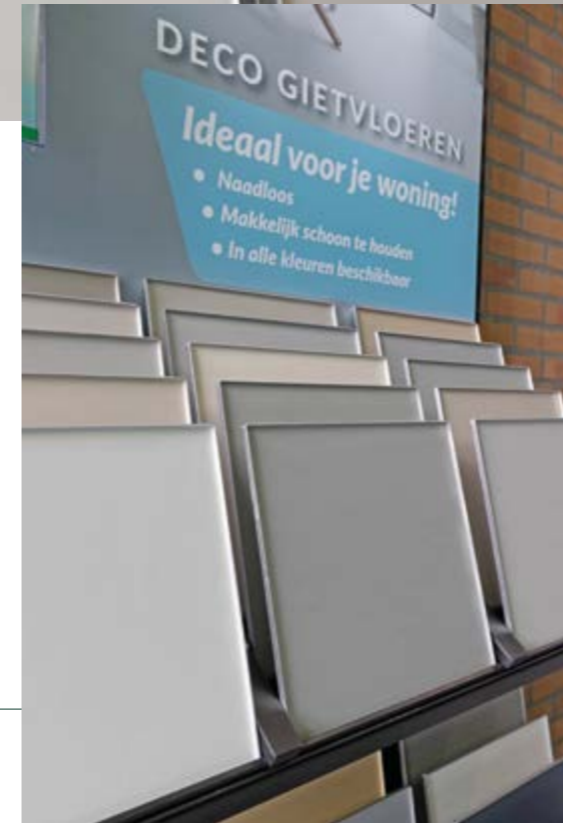
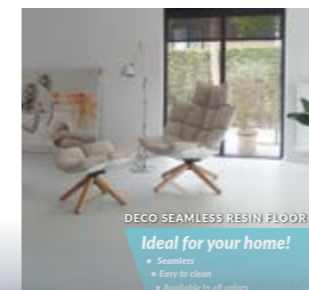
## ANTI-SLIP AND MATTE

For good adhesion to the surface, **Quartzline** recommends applying **Primer GW** under the floor coating. The floor can also be made anti-slip by mixing and applying 3% to 5% polycarbonate grains '**Quartzline Antislip KM**' into the coating. **Theo van der Plas** notes that the floor can also be made completely matte. "If you want a fully matte floor, we recommend applying an additional layer of **Quartzline Coating PU MG Matte**," he advises.

**Quartzline floor coatings** are used in both private and all commercial settings.

## DECO display

With this display, you can give our **DECO floor systems** special attention in your showroom or business. The striking display has space for 36 sample boards and a brochure holder for the DECO brochure. The display is relatively easy to assemble. In addition to the sample boards, smaller sample cards and brochures are also available to give to interested customers.



## QUARTZLINE

### SL-PU UV NF

**Quartzline SL-PU UV NF** is een elastische en flexibele naadloze vloer. Ideaal voor in woningen, maar ook in winkels en kantoren. Deze vloer wordt afgewerkt met **Quartzline Coating PU SG NF matt** of **Coating PU SG NF Satin Gloss**. Er ligt dan een vloer met een uitstekende slijtvastheid en hardheid. Voor een extra antislip laag gebruik je 3% tot 5% **Quartzline 'Antislip KFU'**.

Dit vloersysteem is uitermate geschikt om ingestrooid te worden met decoratieve gekleurde vlokken of een betonlook. Dit maakt de vloer tot een echte blikvanger. Dankzij de dunne verharder is dit vloersysteem gemakkelijk te verwerken. De dunne verharder bewijst vooral bij lage temperaturen haar nut. De vloer blijft ook dan gemakkelijk te verwerken.



## QUARTZLINE CEM

### creates a clean appearance

**CEM MICRO** creates an industrial, modern, and clean appearance, increasingly seen in residential spaces. And not only there - floors and walls in waiting areas, shops, or showrooms are also designed with it.

**CEM LAVA** reflects refined taste. Fine mineral grains form the base. By adding and mixing with epoxy resin, an extremely strong and excellent, scratch-resistant floor is created. Subtle color variations add character to the floor.





# History

On November 3, 1976, Jan Kaptein and his business partner Bert Uithol started installing floors.

**THUS, KUNSTSTOFFTECHNIEK GOUDERAK BV WAS BORN.**

## THE NECESSARY KNOWLEDGE

was gathered from various supplier manuals. In 1980, Kunststofftechniek Gouderak BV moved to Zwijndrecht and changed its name to Kunststofftechniek Zwijndrecht BV. At that time, the company employed three staff members.

## JAN KAPTEIN EXPERIMENTED

extensively with colors and raw materials. His ultimate goal was to color raw materials in such a way that he could supply wear-resistant synthetic floors in all desired colors. His success marked a major breakthrough in the world of synthetic floors. Bert Uithol withdrew as a business partner.

## IN 1989, JAN KAPTEIN WAS ABLE TO PURCHASE A PLOT OF LAND

on Daltonstraat in Dordrecht. A new company building was constructed there. This was urgently needed, as the successful

coloring process resulted in increasingly large quantities of raw materials being delivered. With the opening of the new location in 1991, the company changed its name again. Jan Kaptein continued to lead the company—now with fifteen employees—under the name Quartzline BV. From that moment, the company fully specialized in the development and production of floor systems. Son Arthur Kaptein joined the company.

## QUARTZLINE BV EXPERIENCED TREMENDOUS GROWTH

and became a true family business. Son Arthur and daughter Miranda, also active in the company, became shareholders. In 2009, Jan and Miranda stepped back as shareholders. Jan Kaptein handed over the company to Arthur, who became the 100% owner. Jan ceased his activities, while Miranda remained (and still is) active in the company.



**QUARTZLINE EVOLVED** into a renowned manufacturer of floor and wall systems. The location on Daltonstraat became too small. In 2017, a new, multifunctional building was acquired on a two-hectare plot on W.A. Boogaerdstraat in Dordrecht.

**TODAY**, a modern factory stands there with a 40-meter-high silo tower next to the building. The 22 silos ensure optimal storage capacity and a smooth production process. Thanks to the state-of-the-art process facility and production capacity, Quartzline—now with over 50 employees—can meet the ever-growing demand

for floor and wall systems in the future.

In October 2022, Quartzline BV acquired the Polish flooring manufacturer EUROSTEP. This acquisition nearly doubled Quartzline's production capacity. EUROSTEP not only has a strong market in Poland but also in many other countries worldwide. EUROSTEP is known for its industrial flooring solutions. The manufacturer supplies a wide range of resin products such as epoxy resin, polyurethane, polyurethane cement, PA (Polyaspartic), and MMA (Methylmethacrylate).



Decorative polyurethane resin floors with high user comfort, available in all colors and designs



**DECO UV**

Popular PU resin floor system, ideal for residential spaces to create beautiful design floors with high comfort.

Apartments



**DECO Premium D60**

Versatile, silk-matte PU resin floor system. Made from plant-based polyurethane resins. The seamless floor is easy to clean.

Healthcare, treatment rooms, offices, retail, education.



**DECO Comfort D30**

Comfortable floor: soft, flexible, and elastic. This durable floor offers many pleasant properties and feels comfortable. Can be sealed transparently or in color.

Education, healthcare, retail, culture, leisure.



**DECO EVO D70**

A resin floor system mainly used in commercial settings where a hard floor is required. Thanks to high scratch and abrasion resistance, it is ideal for heavy loads and intensive use.

Logistics, industry, retail.



**DECO Comfort D30 Ultra**

A floor with excellent cushioning and maximum comfort. This system offers enhanced cushioning and excellent sound insulation through a rubber granulate or Silencio dB underlayer.

Education, offices, sports, leisure.



**DECO UV Ultra**

This floor is particularly known for its UV resistance but also for its cushioning properties through an underlayer of rubber granulate or a Silencio dB casting layer.

Apartments, offices, hospitality.



Theo van der Plas

+31 6 53 73 76 87  
theo@quartzline.nl

**Product Training**

Ready to become an expert in our Quartzline floor systems?

We offer comprehensive product training sessions where you can learn all the details and nuances of our high-quality floor systems.

- Every 3rd Friday of the month: **Microcement training**
- Every 4th Friday of the month: **Resin floor training**
- By appointment: **Mortar/Gravel training**

Upon completion of the training, you will receive a signed certificate proving your expertise in our systems. Our product training sessions offer the perfect opportunity to make optimal use of all the possibilities of Quartzline floor systems.

For more information or to register, please contact one of our account managers or send an email to [info@quartzline.nl](mailto:info@quartzline.nl).



**Cleaning a resin floor? No problem!**

- Dry cleaning is easy with a floor wiper, mop, or static cloths. These cloths effortlessly pick up dirt and dust.
- Sweep up coarser dirt with a hand broom and dustpan if needed.
- Remove stains as quickly as possible with a damp cloth and a neutral floor cleaner.

Does your floor need a deeper clean? Then wipe the floor with water. If necessary, you can add a dash of all-purpose cleaner. Aggressive cleaning agents are not necessary to keep your resin floor clean making it a sustainable choice in terms of maintenance.



**Castor Oil**

Quartzline DECO floors, among other things, contain castor oil. **Castor oil** is commonly used in floor coatings. It is a sustainable and natural product. Castor oil is extracted from the fruit of the castor plant (also known as the miracle tree). This plant with red fruits grows extremely quickly. The tree originally comes from India, East Africa, and the southeastern Mediterranean.

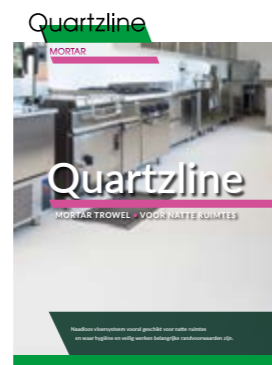
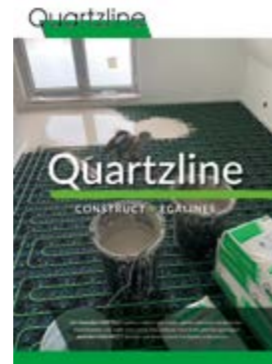
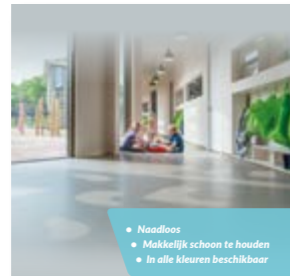


# Floor Inspirations

CLEAR BROCHURES AND SAMPLE FOLDERS ARE AVAILABLE FOR ALL QUARTZLINE FLOOR SYSTEMS.

This allows our customers, such as professional floor installers and construction companies, to provide their clients with all the necessary information. The range of promotional materials includes brochures, sample folders, sample cases, sample boards, and displays.

Promotional materials can be requested through Quartzline's account managers or by phone at (078) 651 31 00.



# Highly efficient underfloor heating

WITH QUARTZLINE FLOOR SYSTEMS

It starts with the foundation. Quartzline offers solutions for “encasing” underfloor heating systems in or on surfaces. Additionally, we offer a wide range of floor coverings for the final finish. Optimal efficiency of underfloor heating and a modern floor are guaranteed.

For the optimal sealing of milled grooves in cement- and gypsum-bound surfaces, **Quartzline MRP repair mortar** is the ideal solution. After sealing the grooves, the floor—depending on the surface and type of underfloor heating—can be leveled with **Quartzline cement- and/or gypsum-bound and fiber-reinforced leveling compounds**.

To get the most out of underfloor heating, a coating with a resin floor provides the best result. By integrating underfloor heating into a complete **Quartzline floor system**, a comfortable underfloor heating system is guaranteed in the home.

For this, we recommend **Quartzline DECO**, a versatile polyurethane floor system: flexible, elastic, and yet robust. This floor offers many pleasant properties and feels comfortable. It can be sealed transparently or in color. An additional transparent sealing layer ensures the floor is even better protected against dirt and chemicals.



*The enjoyment of underfloor heating is now indispensable.*



# The Factory

Quartzline's factory was designed and built entirely according to the ideas and wishes of Managing Director Arthur Kaptein. With a team of construction engineers, a state-of-the-art factory was created where efficiency is paramount. Production is divided into three units.

## DRY PRODUCTION

In the dry production unit, sand, gravel, cement, and fillers are blown directly into the silos. The bulk sand is first dried at 300 degrees in the dryer and then cooled in the silos on the tower side. After drying, the sand is sorted into eight grain sizes—from ultra-fine to coarse. Each grain size goes into its own silo. It is then processed further either per customer request or for our stock.

We purchase cement as a pure raw material. The powder is also blown in, then we dose and mix it, adding the necessary additives. From this, we produce cement and leveling compounds.

## WET PRODUCTION

In the wet production unit, we work with mixing tanks. The automatic supply for these tanks comes from storage tanks. Raw materials are pumped from tankers into storage tanks. From these mixing and process tanks, the liquids flow into the wet production. When we produce in the mixing tanks, the raw materials come from the tanks in the tank field and from IBCs. The additives come from canisters. In the tanks, the materials are mixed, tested, and filled into buckets.

Here, we produce popular products like SL-PU UV for our DECO floors. The clear base is pumped to another tank on the large platform, where it is dosed into buckets and colored.

On the small platform, we mainly work with IBCs. Here, we primarily produce water-based products like coatings, but also pigments, so we can create all the desired colors for our customers' floors.

## FILLING AREA

In the filling area, we mainly fill B-components. Many buckets and canisters are filled here. This area is also directly connected to the tank field, but we also fill a lot from IBCs into smaller packaging for various product lines like epoxy and PU. Each line has its own station, allowing us to fill and switch very flexibly.

Everything that happens in the factory is controlled and continuously monitored from the operator room. The automatic raw material supply is particularly noteworthy. This state-of-the-art process facility is unique worldwide.

# Take the FLOOR TOUR at Quartzline

At Quartzline, we are proud of what we do. So come visit us and take the FLOOR TOUR. The FLOOR TOUR consists of a one-hour guided tour through our modern factory. During the tour, you'll see how our floor systems are produced using the latest production techniques.

After the tour, we visit our showroom to look, feel, and talk—that's what a showroom is all about. Here, you can leisurely explore all Quartzline floor and wall systems and get inspired. Of course, we are available for questions or advice.

**LET US SURPRISE YOU AND DISCOVER EVERYTHING QUARTZLINE HAS TO OFFER.**

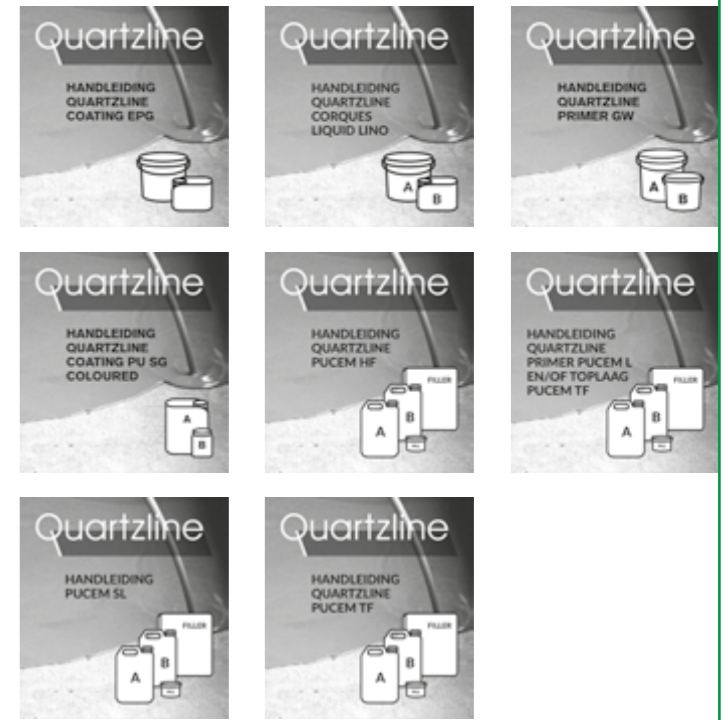
Call us at (078) 651 31 00 to schedule an informal and informative visit to our factory and showroom in Dordrecht!



## Instructions for optimal results

Quartzline floor systems and products perform best when processed with the necessary expertise. With our instructions, we help you avoid incorrect applications and issues when installing floors and floor products. Our instructions can be downloaded from our website under the "DOWNLOADS" button.

**The following Quartzline instructions are available:**  
 Coating EPG | Coating GWV | Coating PU SG Coloured |  
 Primer GW | PUCEM L | PUCEM SL | PUCEM TF |  
 Corques Liquid Lino



**Quartzline BV in Dordrecht develops and produces floor and wall systems exclusively for professional floor installers and construction companies.**

Would you like to pick up your order at our factory in Dordrecht? Order online today, pick up quickly. We ensure your order is ready from 06:00 AM. Additionally, we deliver daily throughout the Netherlands.

# Quartzline spreads its wings



These are busy times for Arthur Kaptein, Managing Director and owner of the flooring manufacturer Quartzline. Kaptein now regularly travels to Poland, where the subsidiary EUROSTEP is based.

We meet Arthur Kaptein in his office at W.A. Boogaerdstraat in Dordrecht—a place where, as he says himself, he is not often found. “I prefer not to manage the company from behind a screen.

I’m much more a doer than a manager. I feel most at home among people and close to the action. In 2017, we bought this building and set it up as a modern, process-driven factory.

Next to the building, we constructed a 40-meter-high silo tower. The 22 silos in the tower ensure optimal storage capacity and a smooth production process.”

“My father founded the family business in 1976. When he succeeded in coloring raw materials in 1983, Quartzline achieved its breakthrough. I joined the company in 1995, and in 2009, I became the sole owner.”

A tour of the company follows. We see a state-of-the-art laboratory, the quality department, and a spacious, well-organized showroom. The wet and dry production departments are efficiently set up. From the logistics department, numerous trucks supply customers both domestically and internationally every day. The pickup department is also bustling with activity daily.

Arthur Kaptein’s philosophy is paying off. “We do what the customer expects from us: good quality, fast delivery times, and a fair price. We simply provide all the ingredients for a top-quality floor.”

The activity in the production departments suggests that Quartzline is doing well. “That’s absolutely true,” says Kaptein. “Everything is running to full satisfaction here. That’s why we want to spread our wings further. That’s how we found EUROSTEP in Poland—a great company that perfectly fits our philosophy. Now it’s about achieving the same in Łódź as we have here in Dordrecht. We’re already supplying worldwide. Who knows what’s next?”

## Tools

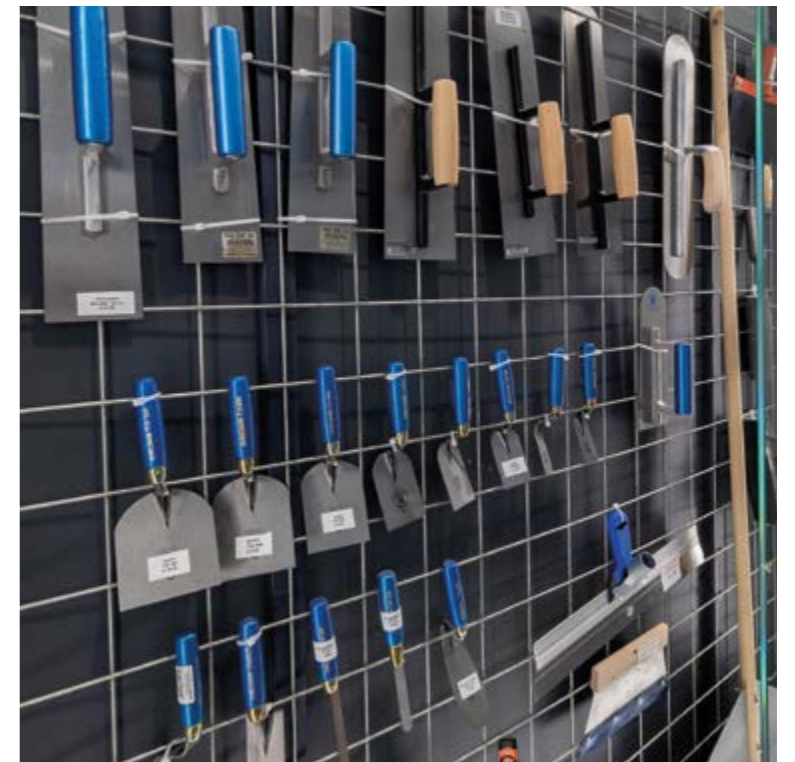
Good tools are half the work—and that’s truly the case. Whether you’re an experienced professional, a DIY enthusiast, or someone who occasionally tackles a task: good tools are indispensable.

Floor installers often use specialized tools, such as mixers, notched trowels, smoothing trowels, and spatulas. Good tools can make the difference between a task that runs smoothly and one that takes much more time and effort.

**QUARTZLINE SUPPLIES THE TOOLS THAT GUARANTEE PROFESSIONAL EXECUTION OF EVERY FLOOR PROJECT.**

Visit our website [www.quartzline.nl](http://www.quartzline.nl) and order your tools in the following categories:

- Profiles
- Buckets and lids
- Smoothing trowels and spatulas
- Rollers and handles
- Mixers
- Gloves
- Sealants
- Grinding discs
- Notched trowels
- Adhesive tape
- Brushes



# QUARTZLINE PROTECT FAST CURE PROTECTS FLOORS

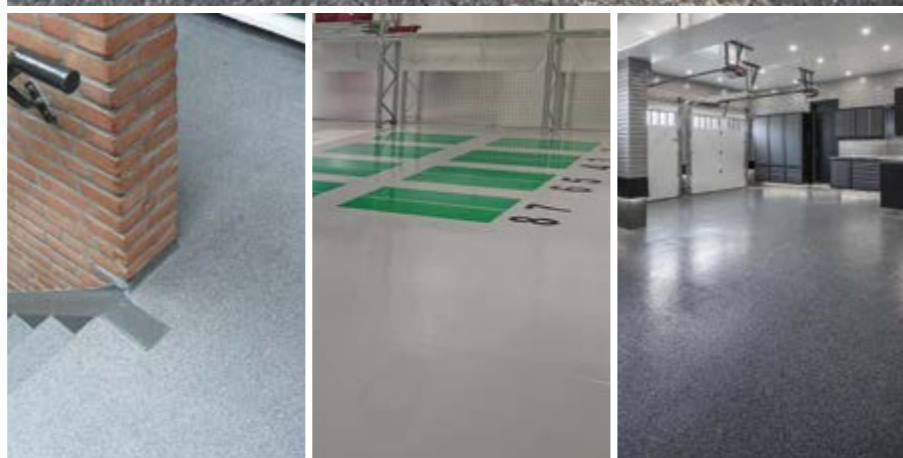
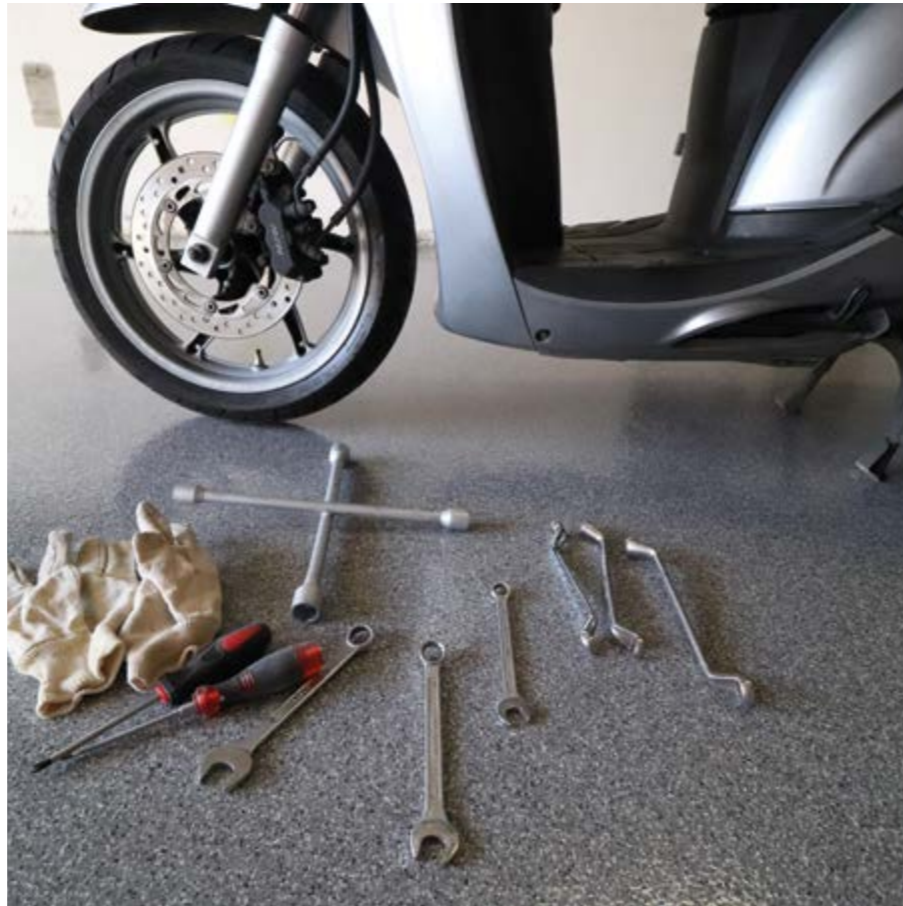
A **Quartzline PROTECT FAST CURE** floor protects floors that are heavily used and subjected to significant stress. This is a floor coating that is quickly walkable again and provides a beautiful end result. For example, an old, worn-out walkway floor can be quickly transformed back into a new, robust floor with just one or two layers of **PROTECT FAST CURE**. Parking decks also look like new after treatment with **PROTECT FAST CURE**.

Quartzline **PROTECT FAST CURE** is a top-quality floor made of two-component polyaspartic, which can be processed with or without color chips. Despite the short curing time, the polyaspartic can be spread and rolled out of the bucket for a long time. The result is a virtually indestructible floor, available in fifteen appealing decorative chip mixes. The neutral colors are available in all RAL and NCS colors.

Quartzline **PROTECT FAST CURE** is cured after just one and a half hours. The floor can be made anti-slip by applying a coating layer sprinkled with quartz sand. A second colored coating layer protects the sprinkled layer.

#### DE VOORDELEN OP EEN RIJTJE:

- UV-resistant
- Cures well even at low temperatures
- High-gloss
- Highly abrasion-resistant
- Available in all colors



# QUARTZLINE ACQUIRES EUROSTEP POLAND

In October 2022, Quartzline BV acquired the Polish flooring manufacturer **EUROSTEP**. Based in Ksawerów, **EUROSTEP** has been producing mainly industrial flooring solutions since 1993. The manufacturer supplies a wide range of resin products such as epoxy resin, polyurethane, polyurethane cement, PAS (Polyaspartic), and MMA (Methylmethacrylate).

With 30 years of practical experience, **EUROSTEP** offers solutions for projects in many countries worldwide. **EUROSTEP** products are of high quality and guarantee a long lifespan.

#### EUROSTEP OFFERS:

- Industrial floors (food and non-food sectors)
- Public utility areas
- Systems for civil and structural engineering
- Infrastructure (roads, bridges, and railways)

Olivier van Meesen, who manages daily operations at **EUROSTEP**, on the acquisition and future plans: *"Quartzline is a top flooring manufacturer, and we aim to be the same. That's why we're excited about the acquisition. We are constantly searching for innovations and market trends here. With Quartzline's experience and expertise, we can continue to create sustainable, aesthetic, and customized solutions worldwide."*



Olivier van Meesen,  
Manager



If you have questions or comments about **EUROSTEP**, you can contact Quartzline at +31 78 651 31 00.

Tymiankowa 37/39  
95-054 Ksawerów  
t + 48 609 222 050  
e info@eurostep.pl  
i www.eurostep.pl

# EUROSTEP TOP-CLASS FLOOR COVERINGS



## EUROSTEP PARKING FLOORS

Parking garages exist both above and below ground, often with multiple levels. Parking garages are often about aesthetics, design, wayfinding, equipment, and safety, but an aspect not to be underestimated is the floor coating of parking decks and ramps. The floors of a parking garage are subjected to heavy loads.

**EUROSTEP** offers various floor coatings suitable for parking garages, such as concrete floors, epoxy resin floors, stone carpet floors, and MMA floors.

## EUROSTEP ESD FLOORS

Certain spaces require special floors- think of data centers, server rooms in companies, or laboratories. In such areas, static electricity must not be transferred to equipment, people, or machines. An **ESD floor** is indispensable here.

**ESD** stands for **Electro Static Discharge**. This prevents the transfer of static electricity. An **ESD floor** does not build up static voltage because it is conductive. **EUROSTEP** offers two absolutely reliable **ESD floor** solutions.

## EUROSTEP MARKINGS AND LINES

If you pay attention, you'll see markings and lines everywhere- in all shapes, sizes, and colors. Think of (highways), parking lots, airports, parking garages, schoolyards, warehouses, electric vehicle charging stations, production rooms, or loading and unloading zones.

**EUROSTEP** supplies all products in the field of markings and lines - materials that burden the environment as little as possible, can be applied quickly, and provide safety and clarity.

## EUROSTEP MMA FLOORS

**EUROSTEP MMA** floors can be installed in just one day (or night). In a short time, a completely new floor is created that meets all your requirements. The floor can even be applied at extremely low temperatures. Despite the short curing time, the products are pleasant to process. By incorporating colored quartz, the floor is available in many colors and designs. **MMA** is known for its mechanical strength - ensuring a durable floor that you'll enjoy for many years.

## EUROSTEP PUCEM Floors

### EUROSTEP PUCEM HF TROFFEL

**EUROSTEP PUCEM HF TROFFEL** is a polyurethane cement trowel floor system that is highly resistant to hot water and temperature fluctuations. The mixture of polyurethane and cement is applied to the surface with a trowel. The result is a thick and robust floor.

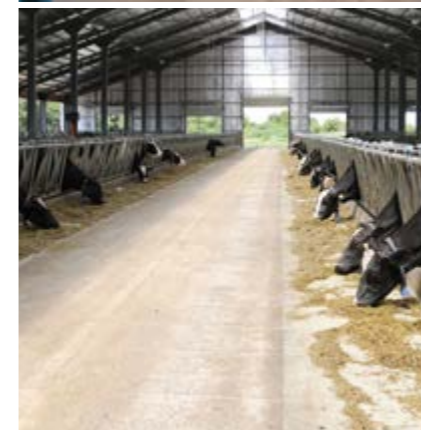
### EUROSTEP PUCEM TF

**Self-leveling sprinkle system**  
**EUROSTEP PUCEM TF** is a versatile, durable, and anti-slip floor coating

made from a combination of polyurethane, cement, and sprinkle material. **PUCEM TF** offers numerous advantages and is used in industrial settings but is increasingly seen in residential spaces as well.

### EUROSTEP PUCEM SL

**Self-leveling EUROSTEP PUCEM SL** is a floor material that combines the properties of polyurethane and cement. It was developed to create a smooth and seamless floor surface that is easy to clean.





# WE ARE QUARTZLINE!

Quartzline

**QUARTZLINE BV**  
in **DORDRECHT**

Develops and produces  
floor systems exclusively for  
professional floor installers  
and construction companies.

W.A. Boogaerdstraat 5  
3316 BN Dordrecht - NL  
+31 78 651 31 00  
info@quartzline.nl

 [www.quartzline.nl](http://www.quartzline.nl)

## DISCLAIMER

This is a publication by Quartzline BV,  
W.A. Boogaerdstraat 5, 3316 BN Dordrecht.  
This edition was compiled with care. We accept no  
liability for color deviations compared to actual floors  
or for any inaccuracies in texts or other information.  
Printing and typesetting errors reserved. Visit our  
website for more information.

